

# Asterix et Cleopatre - "Le Pudding a L'arsenic"

Trumpet in B $\flat$

Bass line



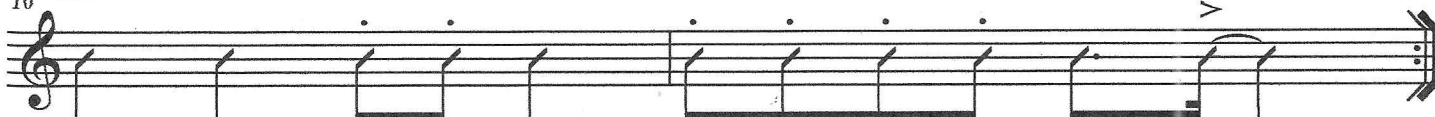
A



5 Bm7(b5) E7 A



10 Bass line



B



16 Bm7(b5) E7 A



19 (Rhythm section)



C



26 Drums



(Rhythm section)

(rhythm out!)

Yeah!